



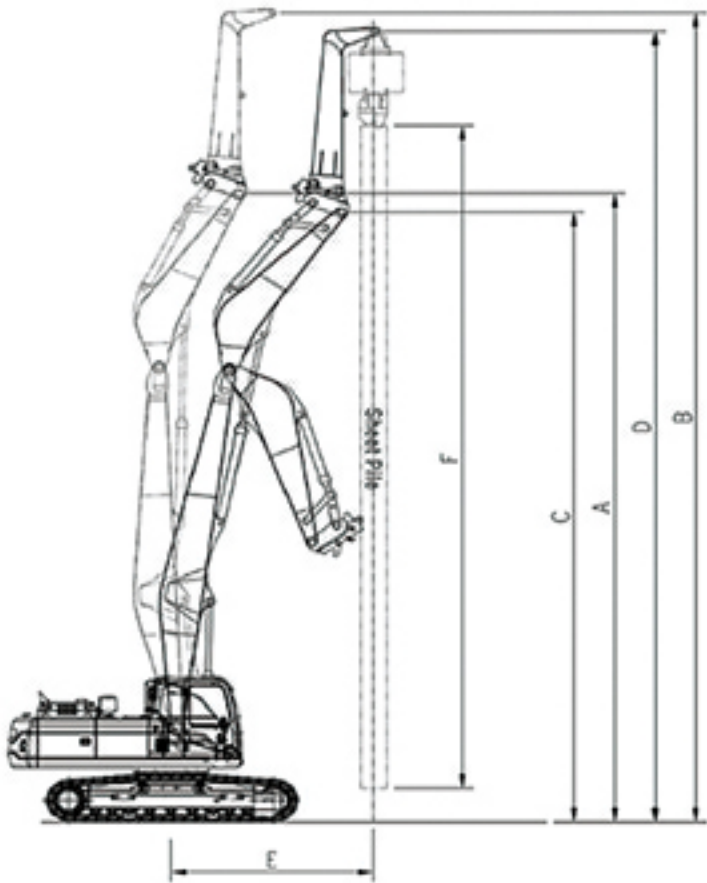
Max. Height : 16.7m for DX300LC-5



Max. Height : 16.7m for EC300EL

• HANDLING CONSTRUCTIONS SITE SHEET PILE.

Working Range



- All packages come fully equipped with**
- Straight boom & linkage type arm
  - Arm cylinder & Bucket cylinder & its piping
  - Grease piping on the boom and arm
  - Attachment open/close, rotating, drain piping on the boom and arm

- Features**
- High strength, low alloy steel yields maximum strength to weight ratio
  - Customized designed for specific reach and force
  - Versatile configuration thanks to variable boom lengths & size of cylinder
  - Vibro-hammer & extension arm available by option

EXCAVATOR OPERATING WEIGHT	SNS MODEL	MAX. Arm End Pin Height		MAX. Ext' Arm End Pin Height		Working. Arm End Pin Height		Working. Ext' Arm End Pin Height		Min. Working Swing Radius		Height. Sheet Pile	
		A		B		C		D		E		F	
		m	ft	m	ft	m	ft	m	ft	m	ft	m	ft
20 - 24 ton 44,000 - 53,000 lbs	SPH21-29-SL	12.3	40'3"	15.2	49'9"	11.9	39'0"	15.0	49'2"	3.5	11'5"	12.0	39'4"
27 - 32 ton 60,000 - 70,000 lbs	SPH30-38-SL	13.3	43'6"	16.7	54'8"	12.9	42'3"	16.6	54'4"	3.9	12'8"	14.0	45'9"
32 - 40 ton 70,000 - 88,000 lbs	SPH36-43-SL	14.9	48'9"	18.3	60'0"	14.3	46'9"	18.0	59'0"	5.7	18'7"	15.0	49'2"
45 - 50 ton 99,000 - 111,000 lbs	SPH50-49-SL	16.4	53'8"	19.8	64'9"	15.6	51'2"	18.9	62'0"	6.2	20'3"	16.0	52'5"

Working range shown is a general representation and will vary with machine and attachment size.  
These details are for guidance only and may be changed for improvement without prior notice.



Max. Height : 16.7m for DX300LC-5



Max. Height : 16.7m for EC300EL

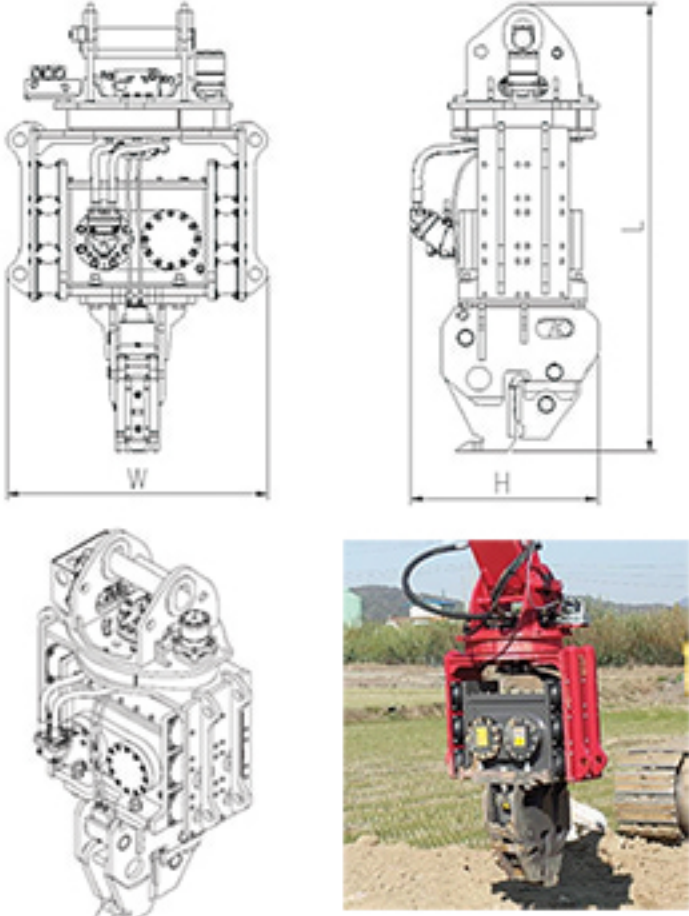


Max. Height : 16.7m for DX300LC-5



Max. Height : 16.7m for DX300LC-5

ATTACHMENT; VIBRO HAMMER



MODEL	UNIT	W250	W300	W400
Suitable Excavator	ton	18 ~ 26	25 ~ 35	34 ~ 46
Frequency	bpm	2,800 ~ 3,000	2,500 ~ 2,700	2,000 ~ 2,200
Eccentric Moment	Nm/in lbs	66 / 584	80 / 708	100 / 885
Centrifugal Force	kN	450	500	550
Amplitude	mm	12	14	16
Setting Pressure	bar/psi	250/3,626	250/3,626	280/4,061
Max.Operating Oil Flow	ℓ/min	170 - 200	210 - 230	250 - 260
Weight	kg	1,550	1,700	1,800
Length(L)	mm	1,840	1,900	1,920
Height(H)	mm	750	790	840
Width(W)	mm	1,040	1,100	1,190

Working range shown is a general representation and will vary with machine and attachment size.  
These details are for guidance only and may be changed for improvement without prior notice.